



VISION



Exclusive Construction Partner



CHIELO by PlanetVision

**Each detail tells a
story. Listen closely.**

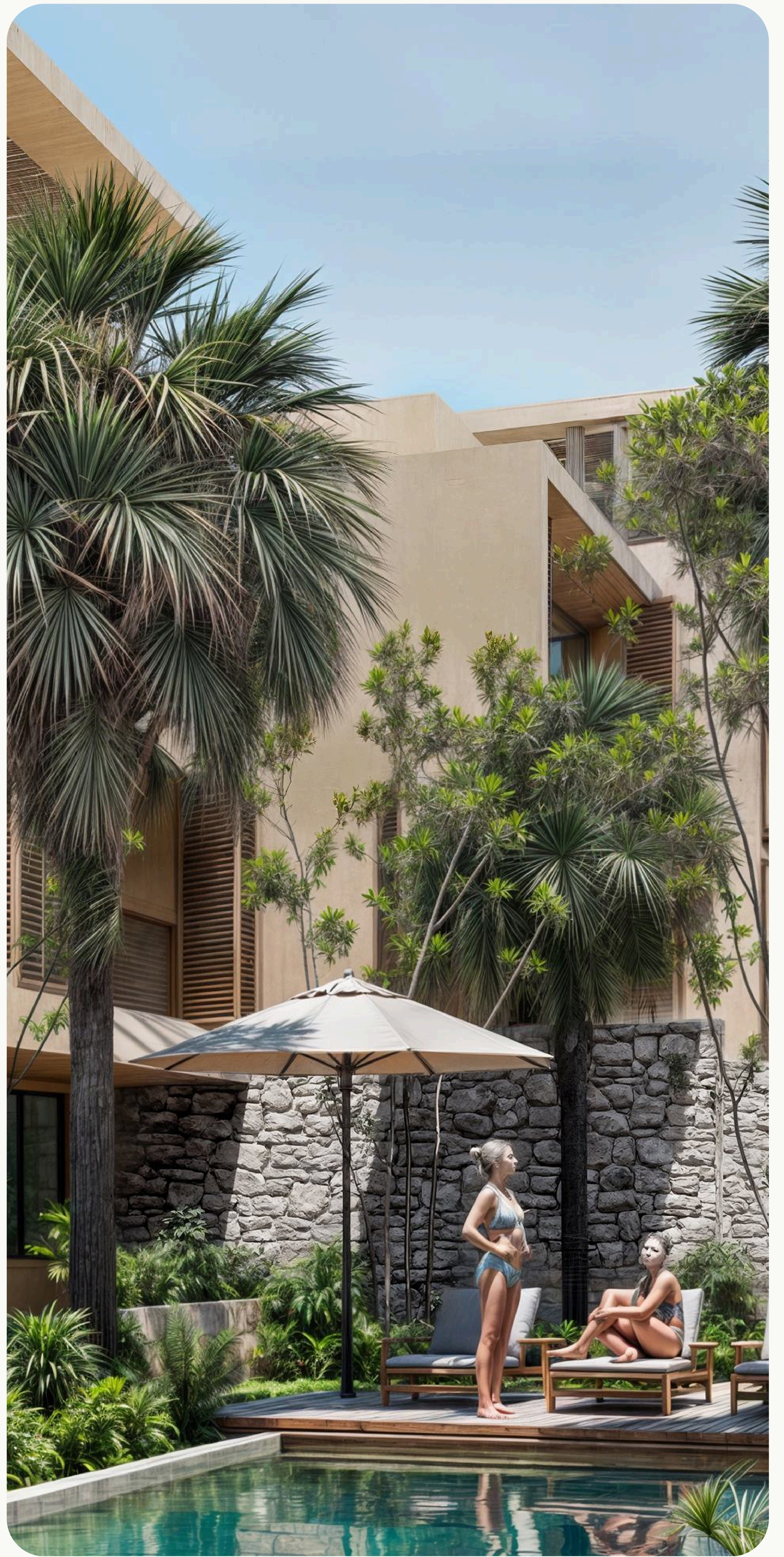
CHIELO is designed to be not just a home, but a sanctuary where each detail tells a story.



The Art of Fulfilled Living

Elevates lifestyle to an art form.
Suggests mastery, sophistication,
and intentional living practices.

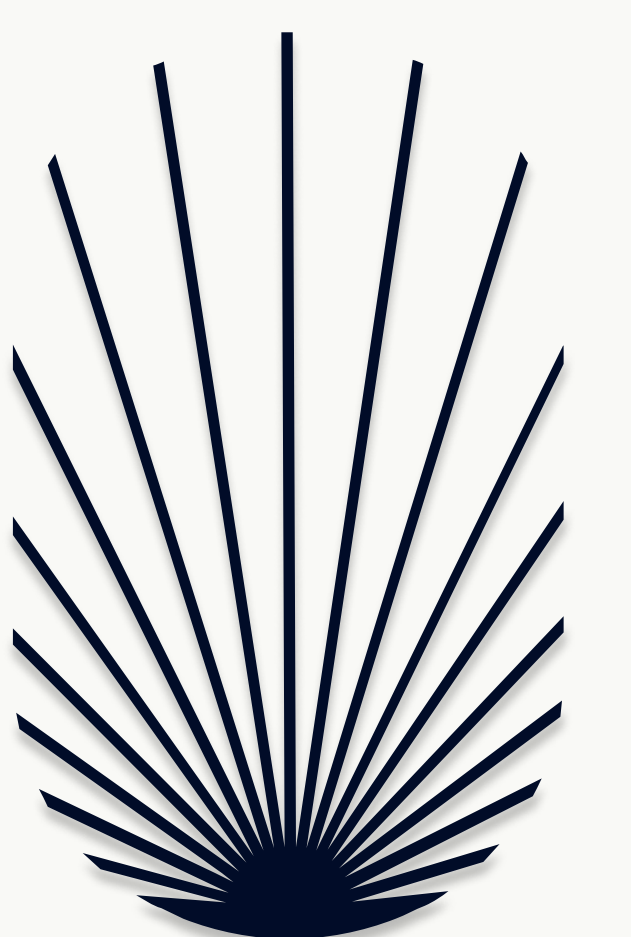
CHIELO is designed to be not just a residence, but a nurturing environment where life flourishes and purpose unfolds.



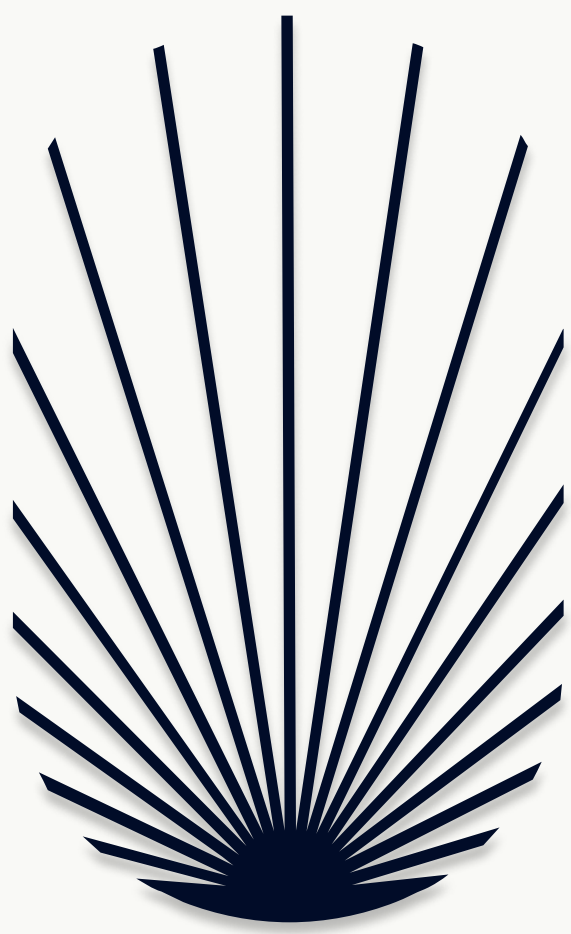
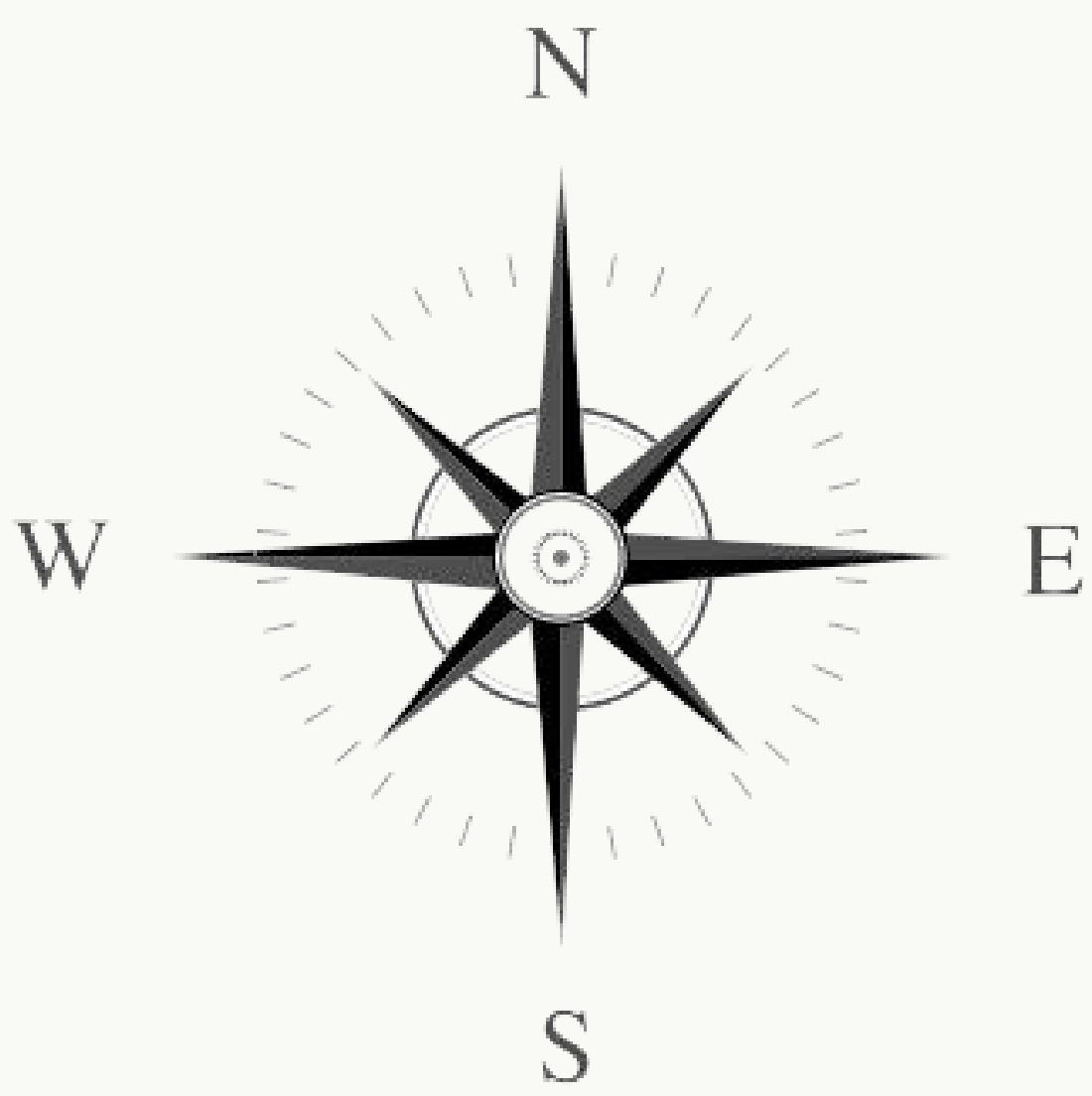
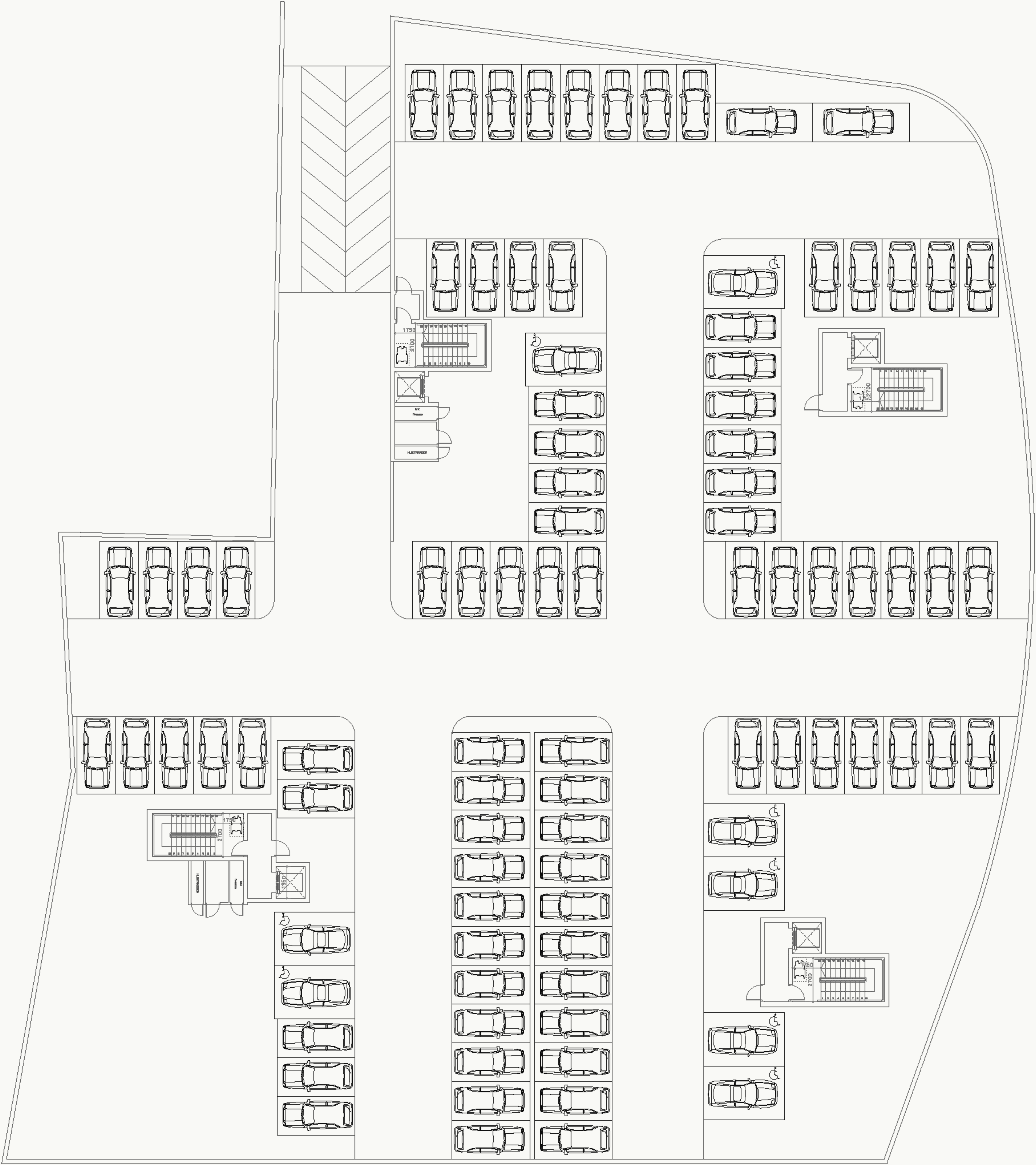
Intimate Sanctuary

The art of lives in the details – in the way morning sunlight filters through your living room, casting golden patterns on handcrafted surfaces.

This is more than a home – it's a return to life's essential rhythms. Where contemporary luxury meets the soul-stirring peace of mountain vistas, where the fragrance of wild herbs dances through your windows, and where the warmth of genuine community embraces you like a cherished family tradition. At CHIELO, cosiness isn't just a feeling – it's a way of being.

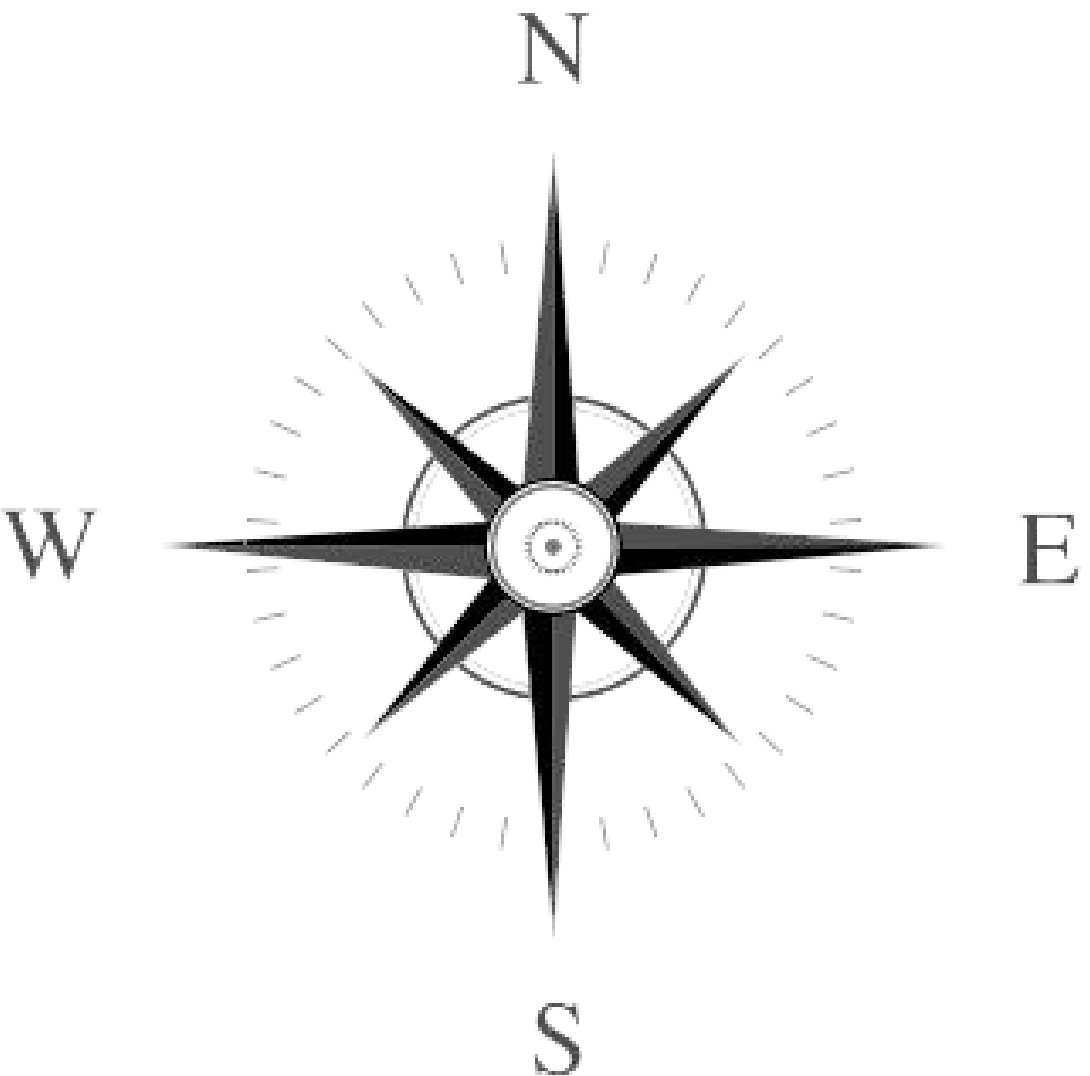


Basement



Ground Floor

- BLOCK A
- BLOCK B
- BLOCK C
- BLOCK D

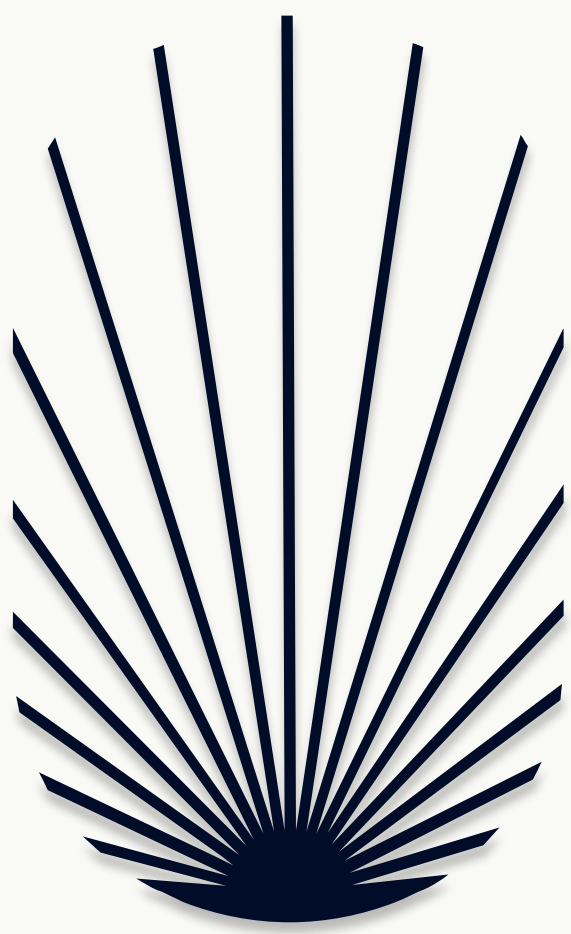
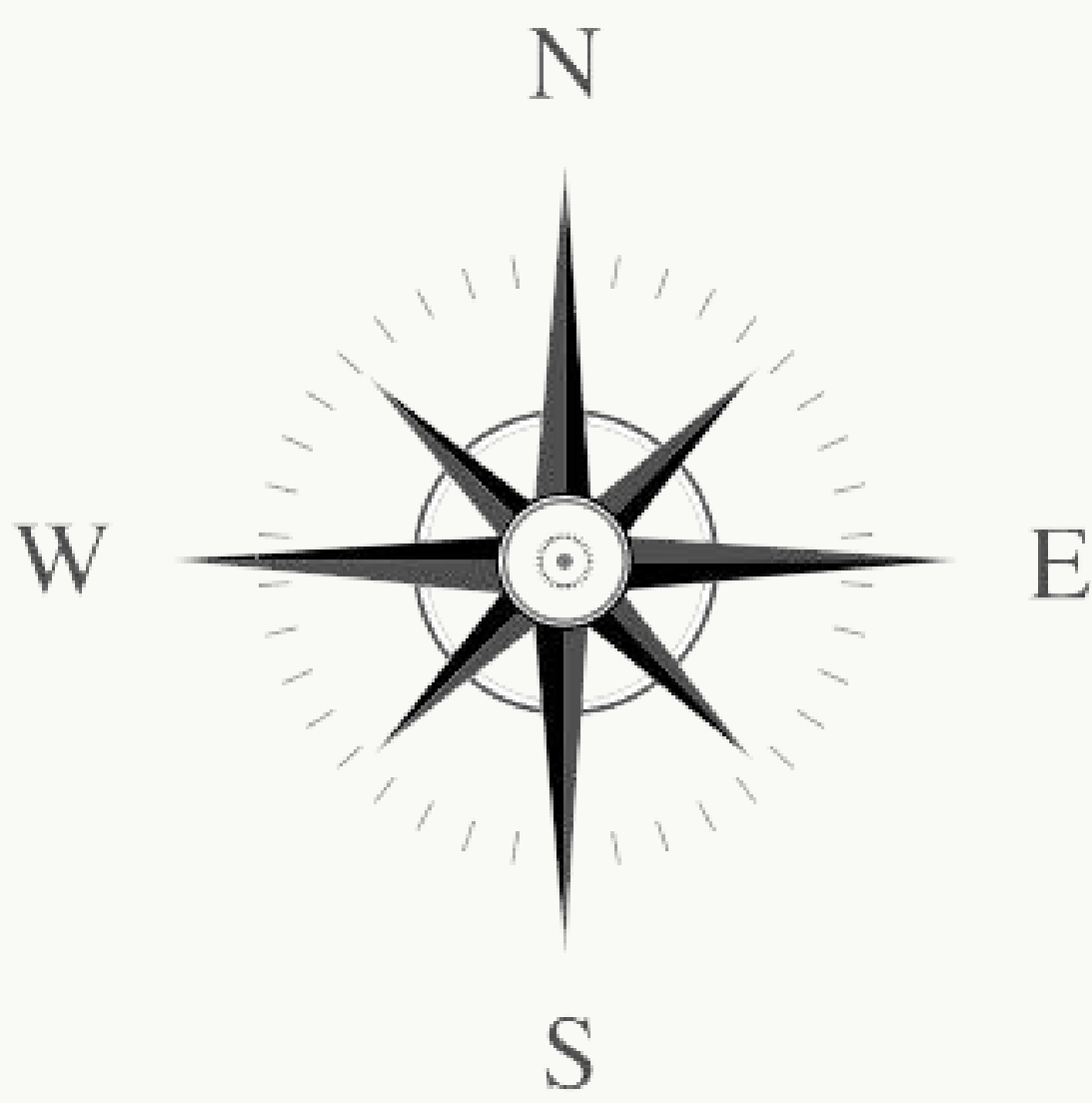
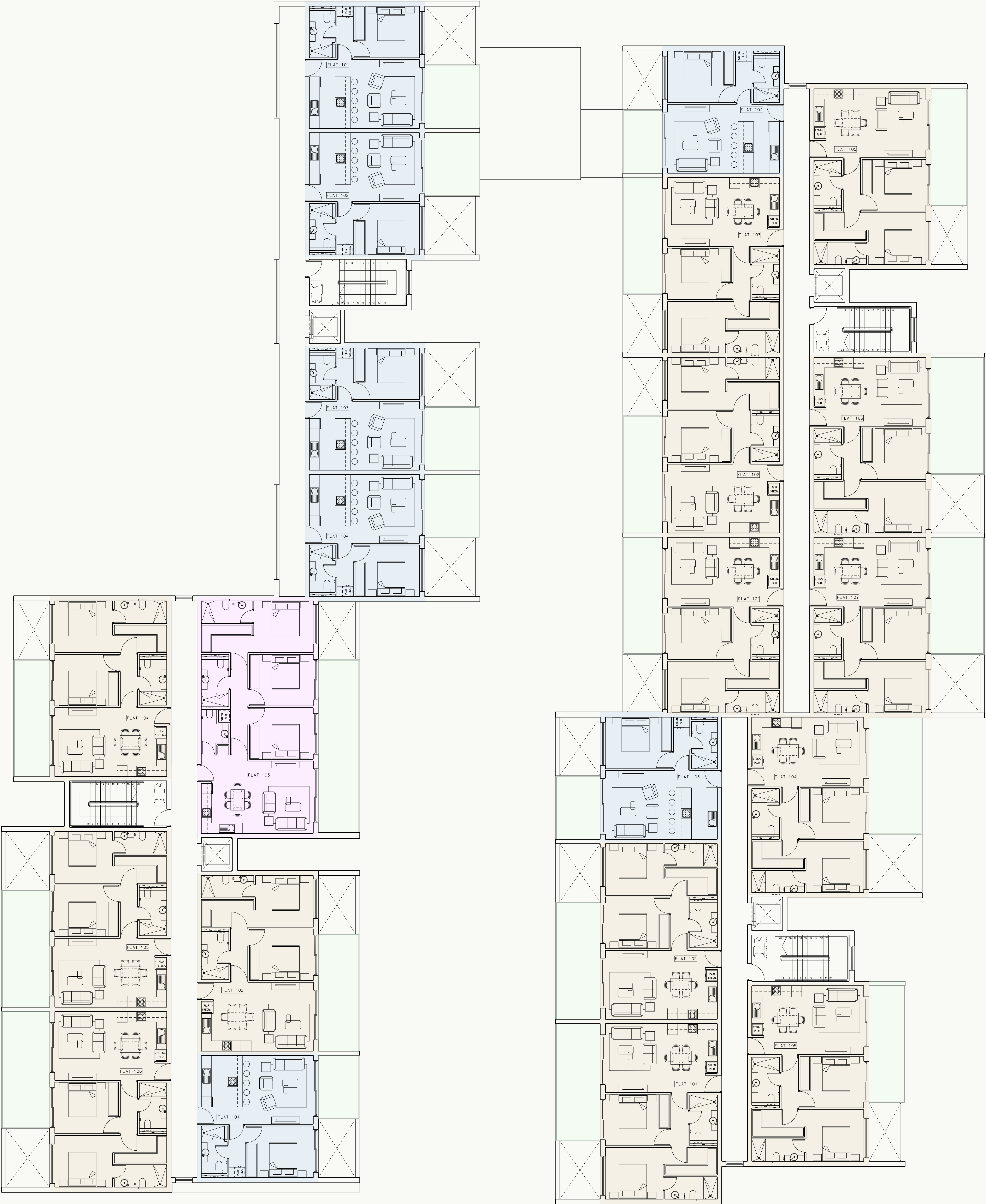


Location



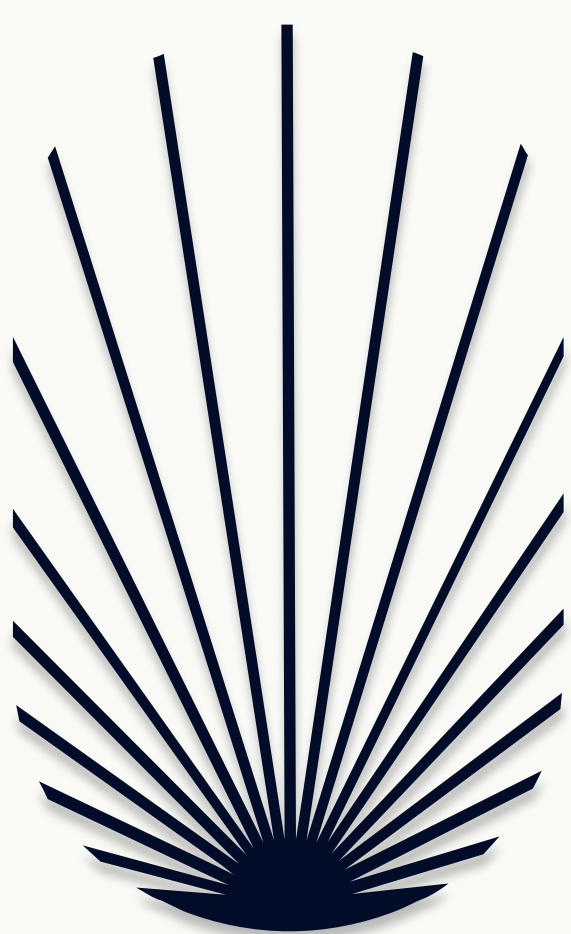
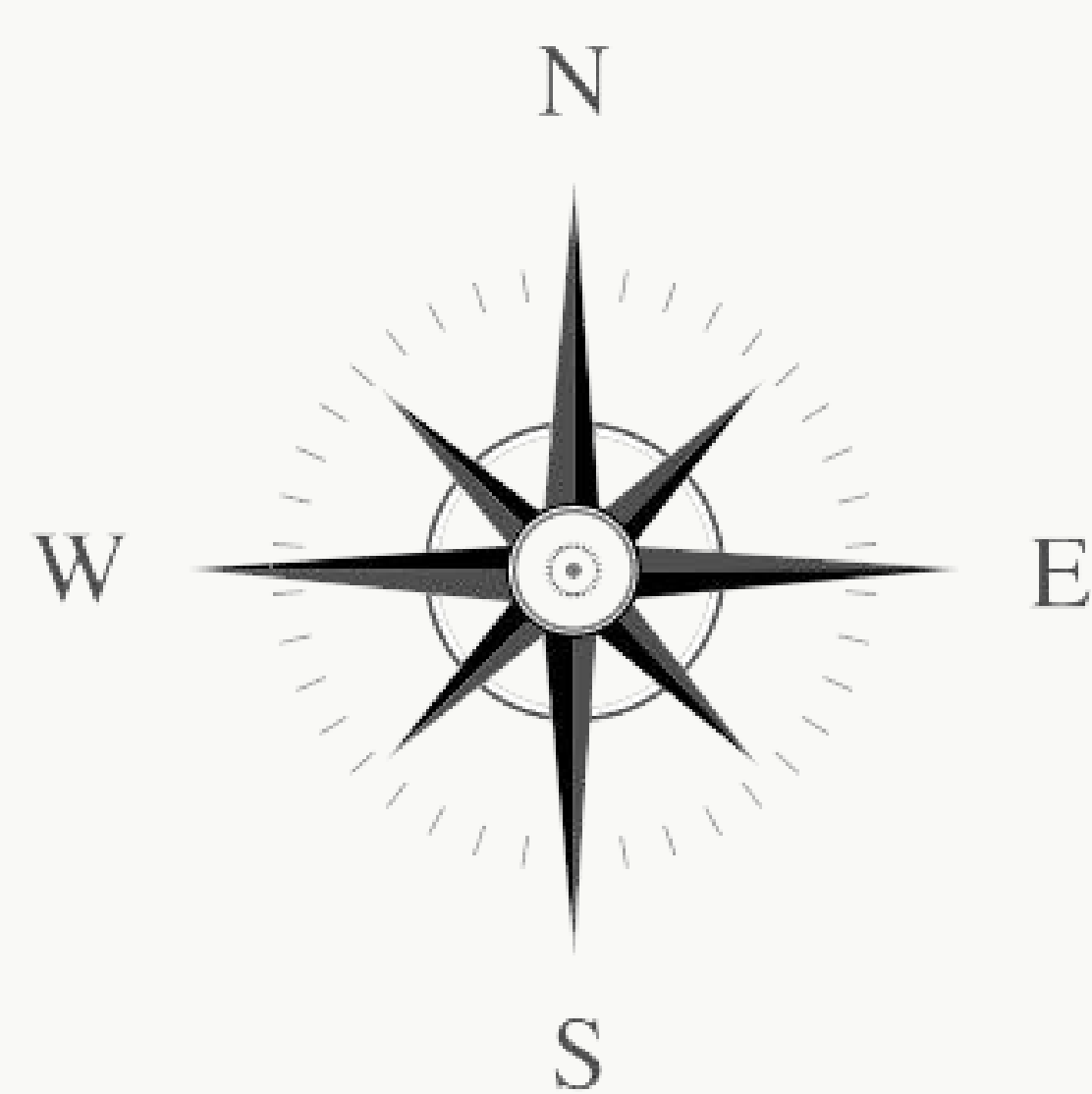
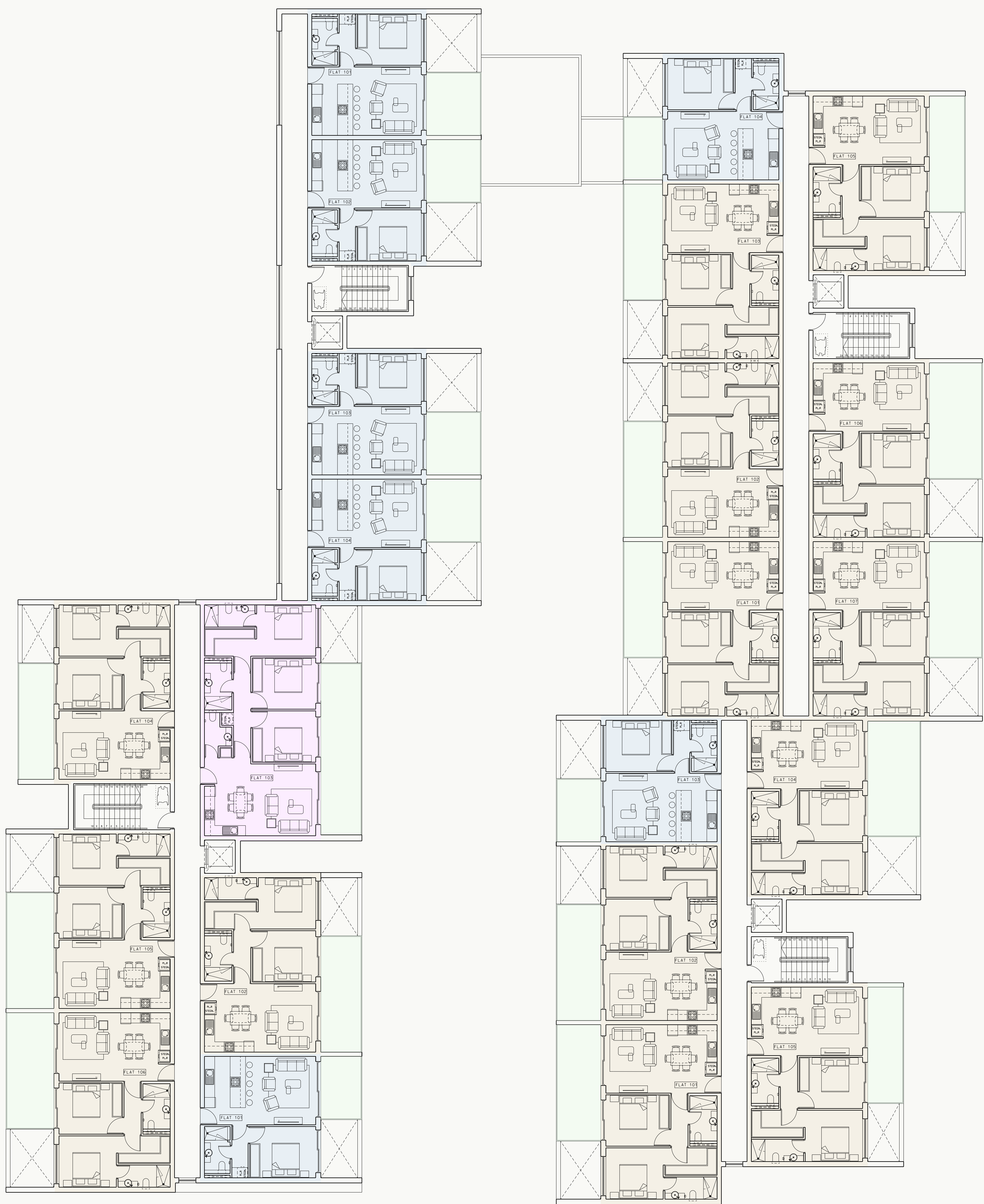
First floor

22 Apartments



Second floor

22 Apartments



2 Bedroom

101 BlockA

92,7 Sq.m

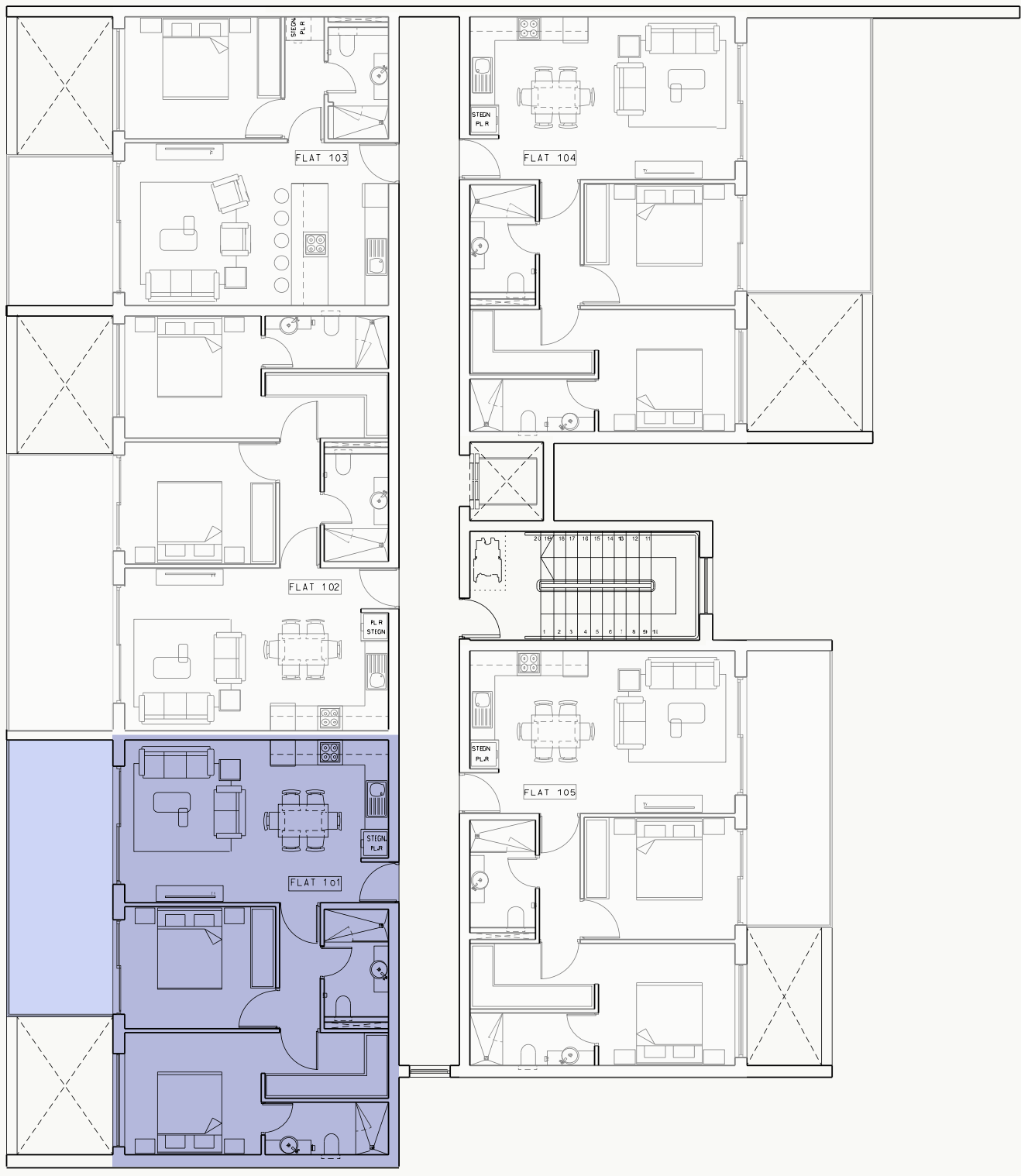
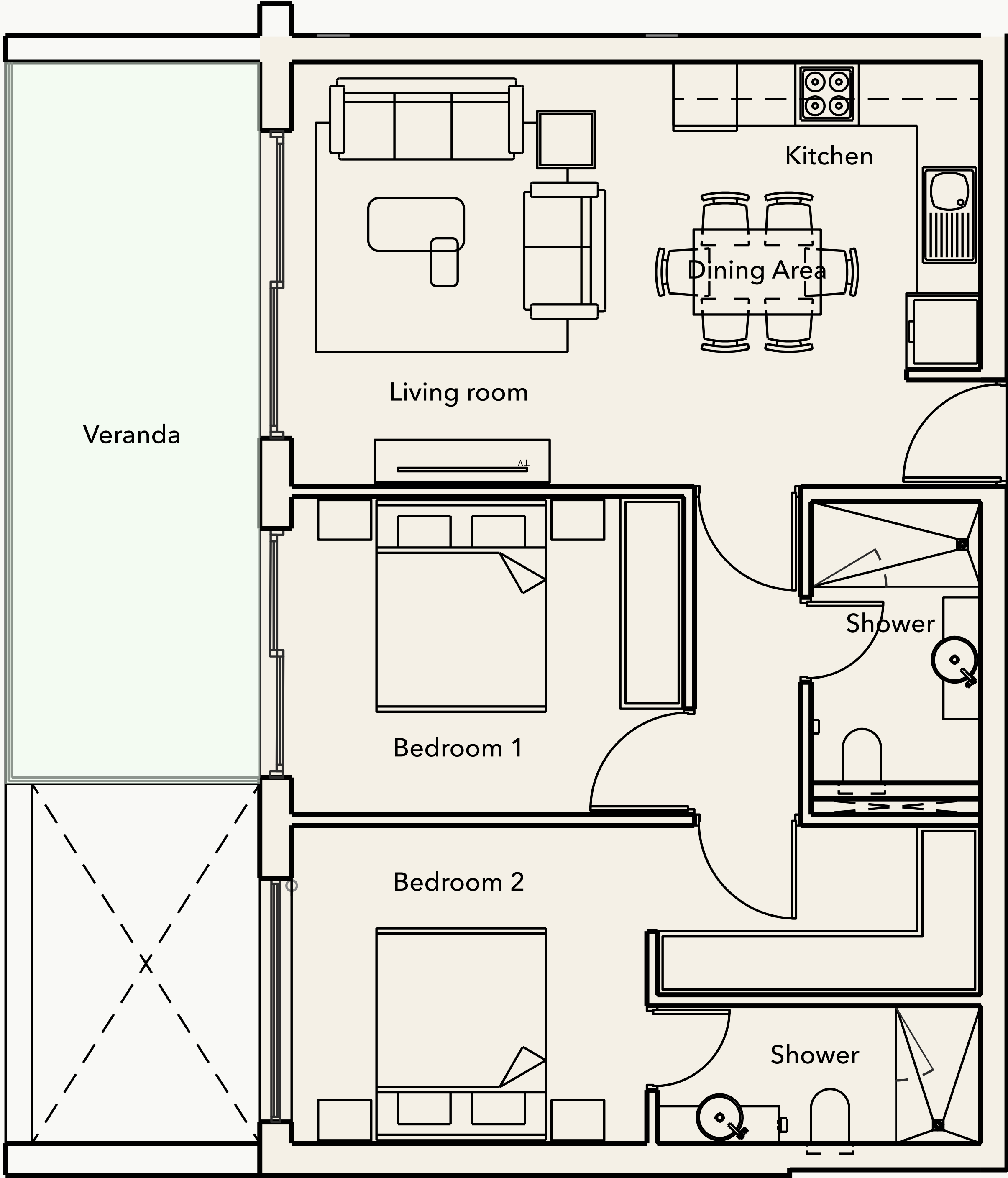
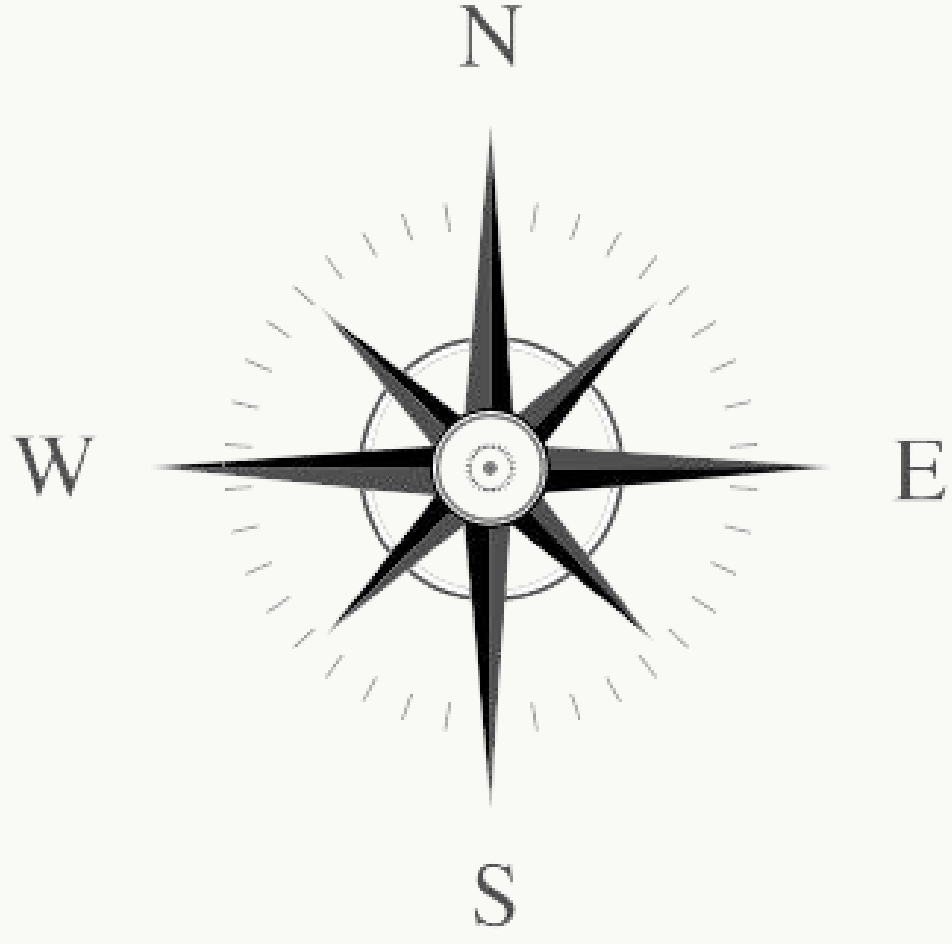
Total Living Area

75 Sq.m

Internal Living Area

17,7 Sq.m

Outdoor Living Area



1 Bedroom

103 BlockA

62,1 Sq.m

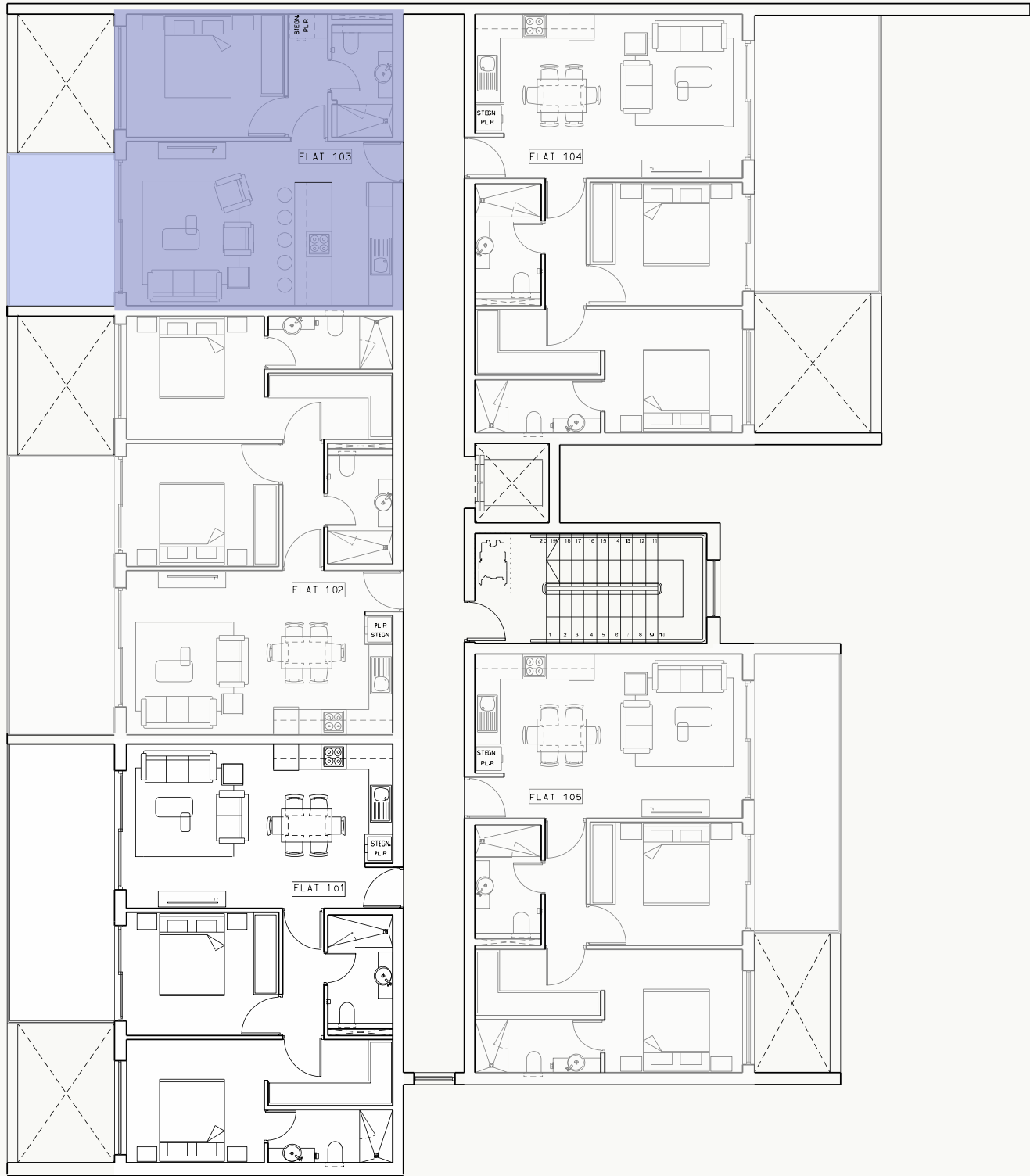
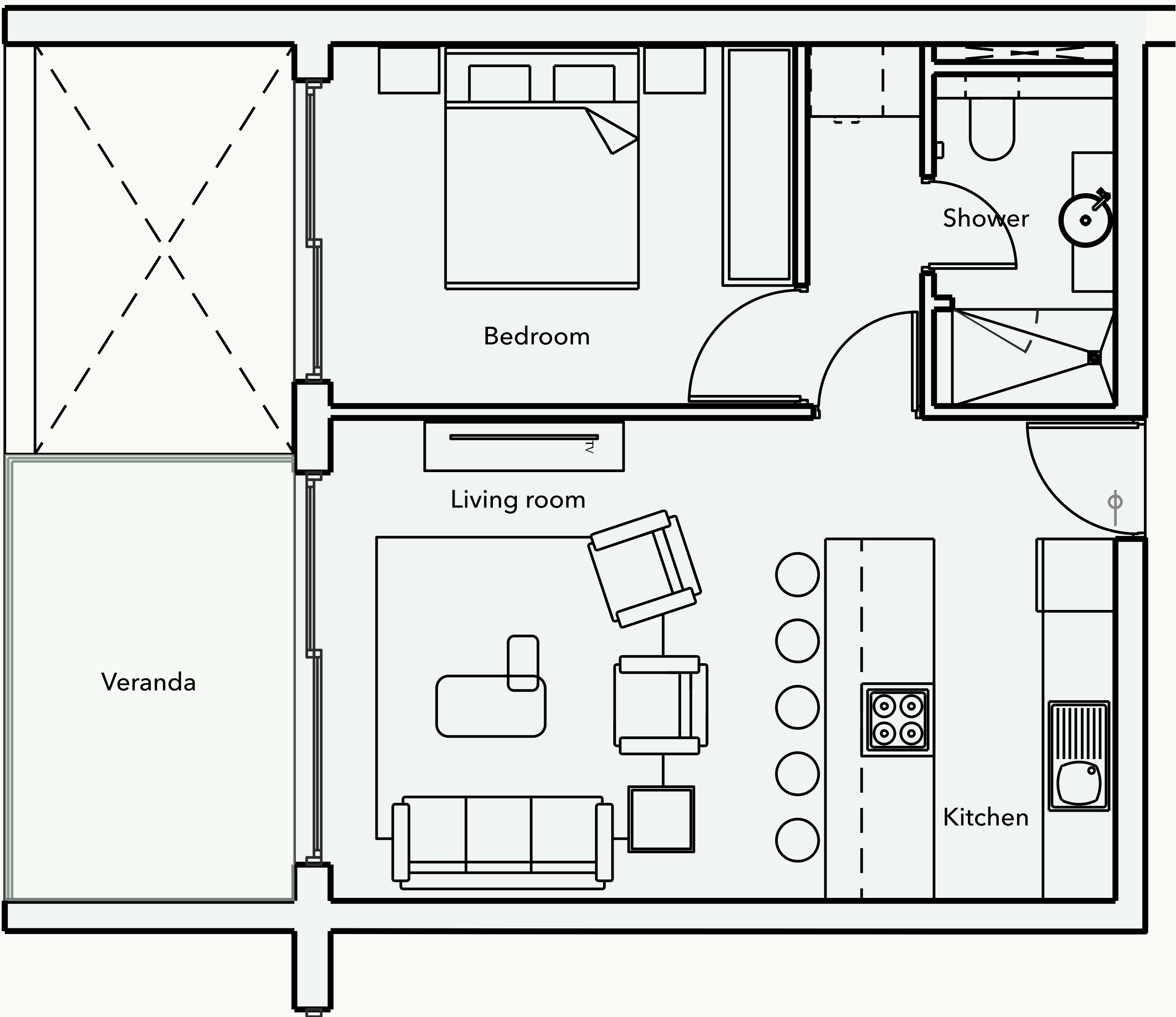
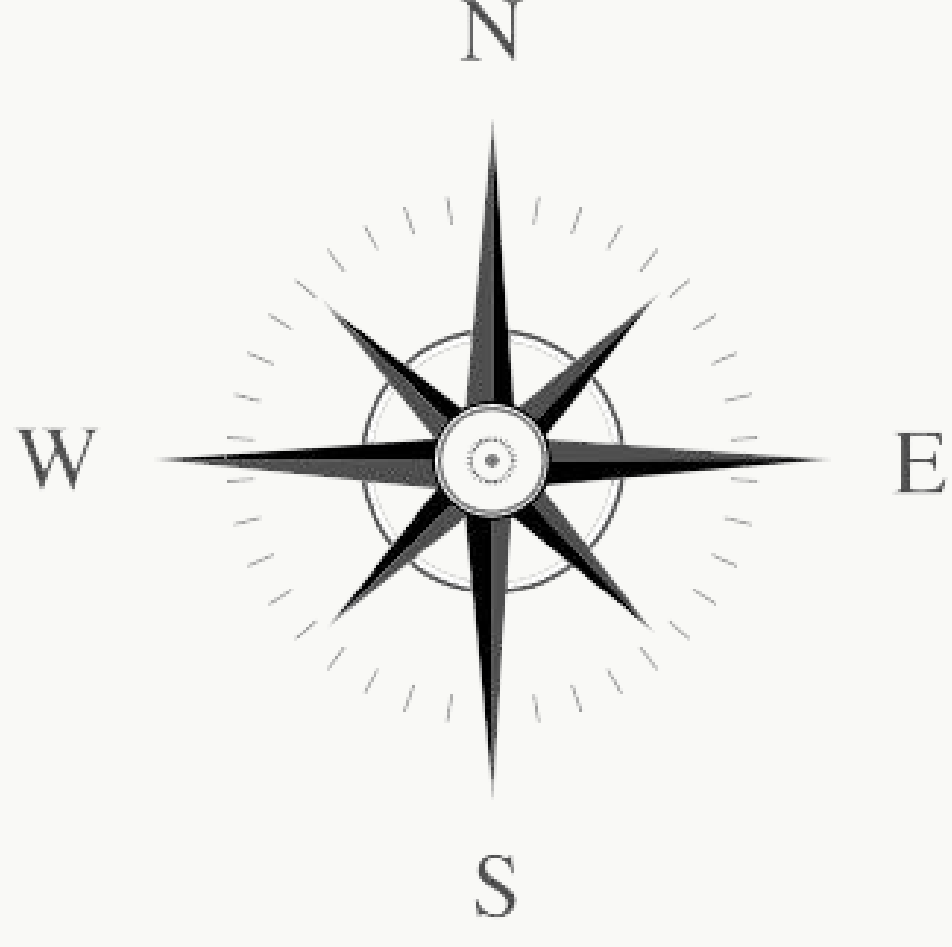
Total Living Area

52,5 Sq.m

Internal Living Area

9,6 Sq.m

Outdoor Living Area



2 Bedroom

101 Block B

89,66 Sq.m

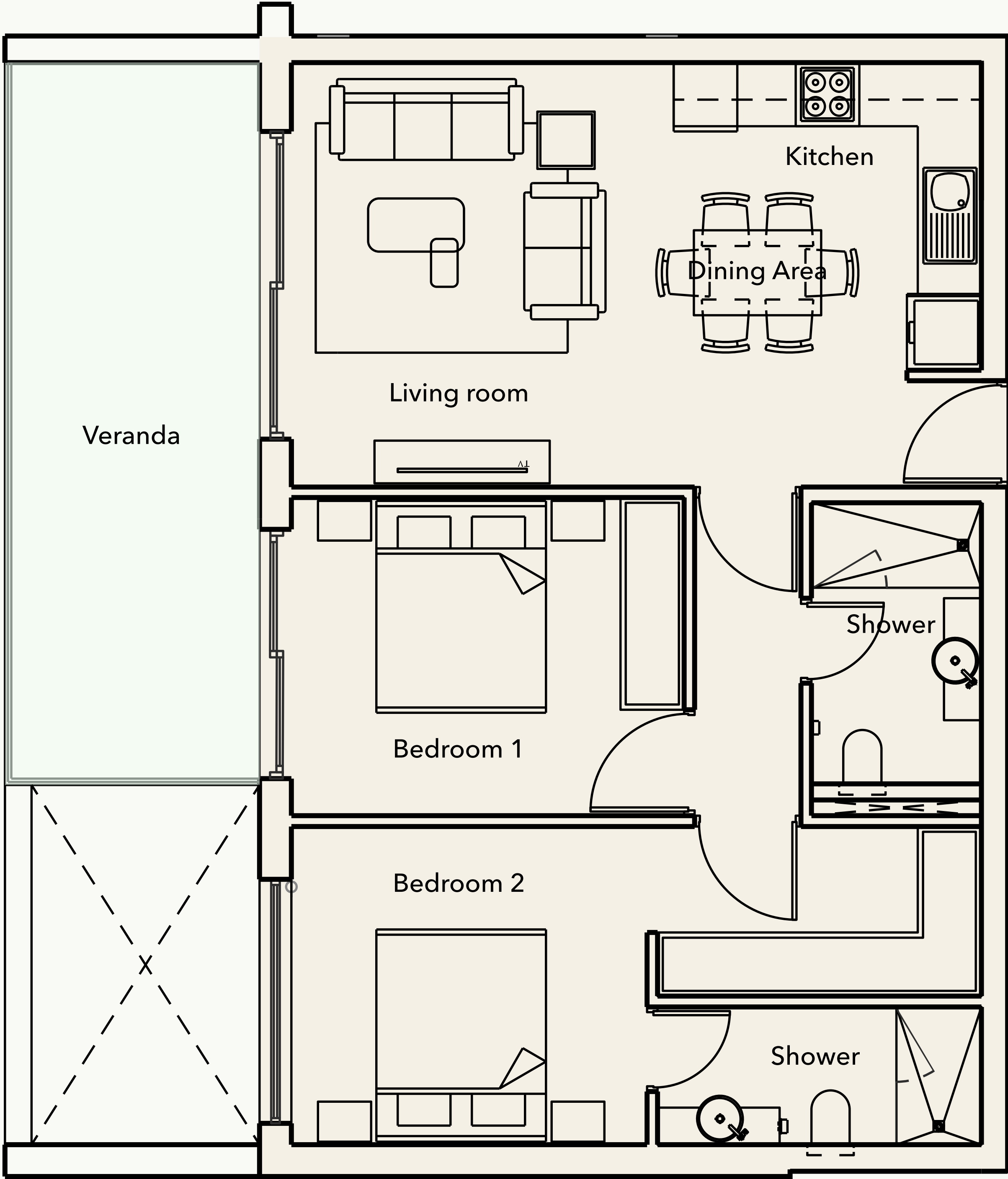
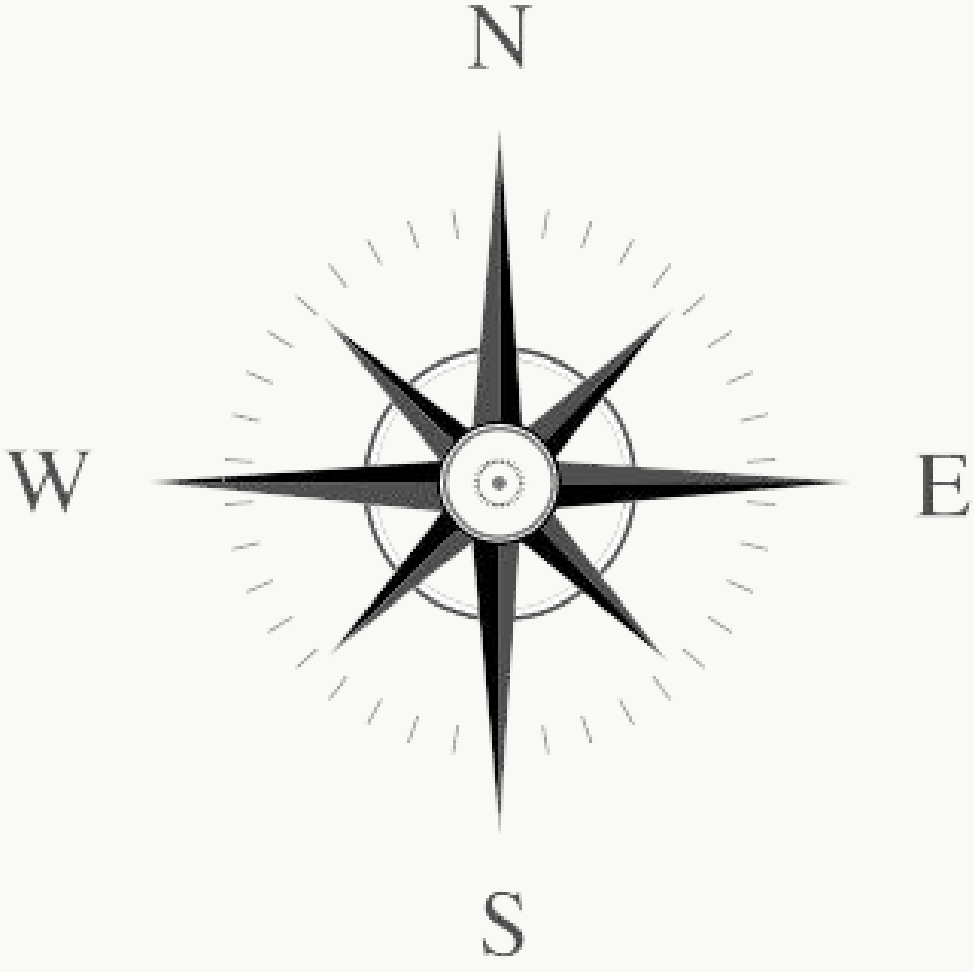
Total Living Area

74 Sq.m

Internal Living Area

15,66 Sq.m

Outdoor Living Area



1 Bedroom

104 Block B

61,5 Sq.m

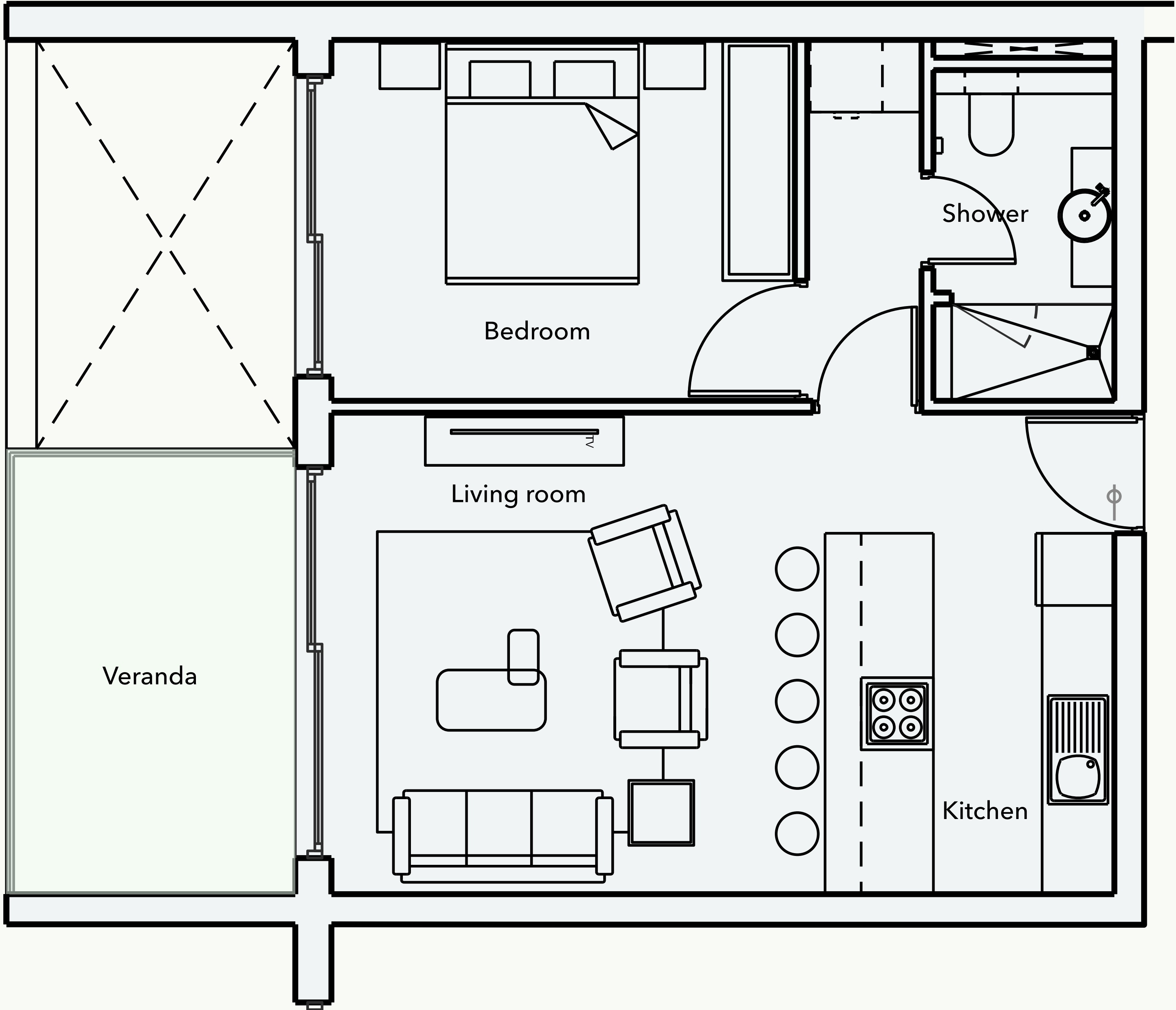
Total Living Area

53 Sq.m

Internal Living Area

8,5 Sq.m

Outdoor Living Area



1 Bedroom

101 Block

C

64,14 Sq.m

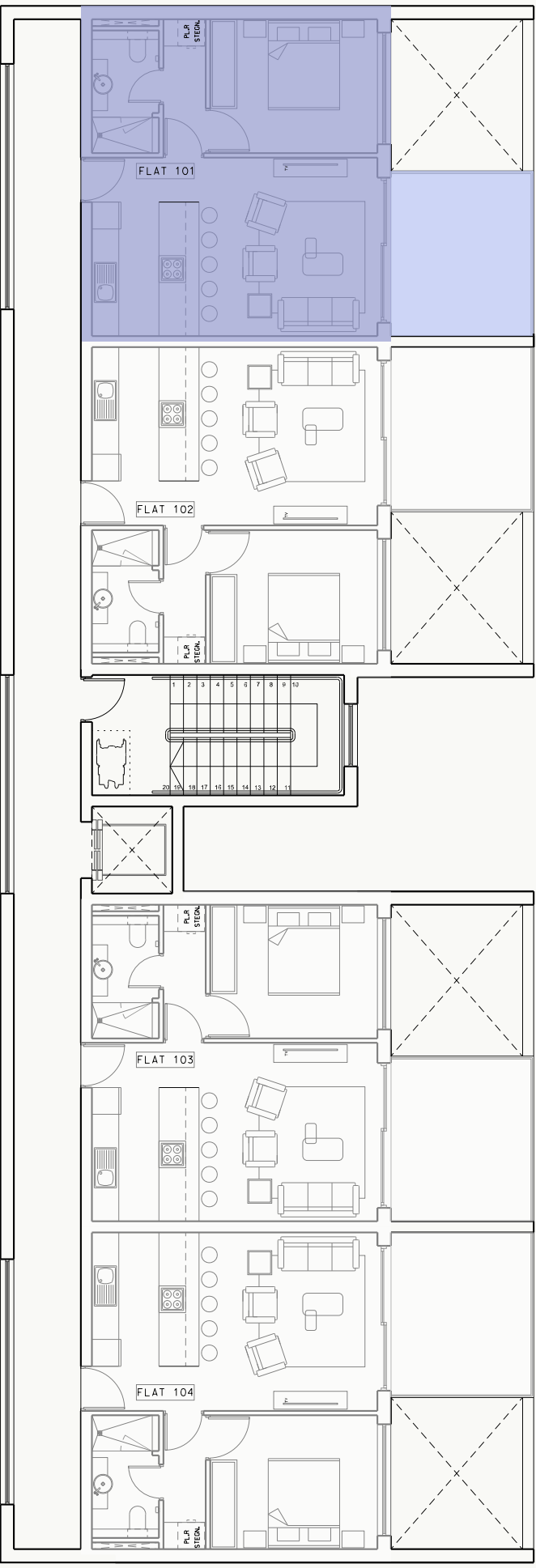
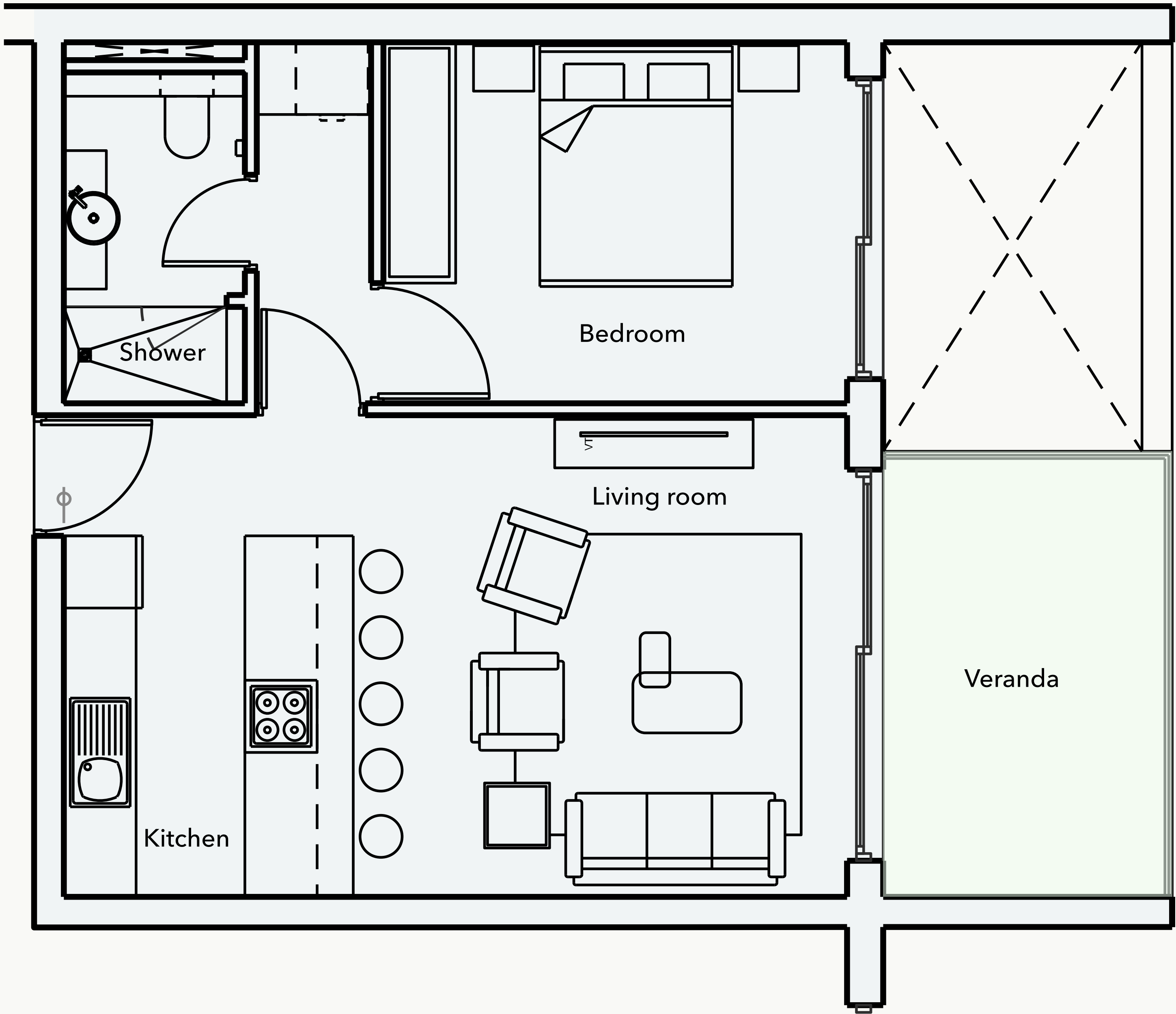
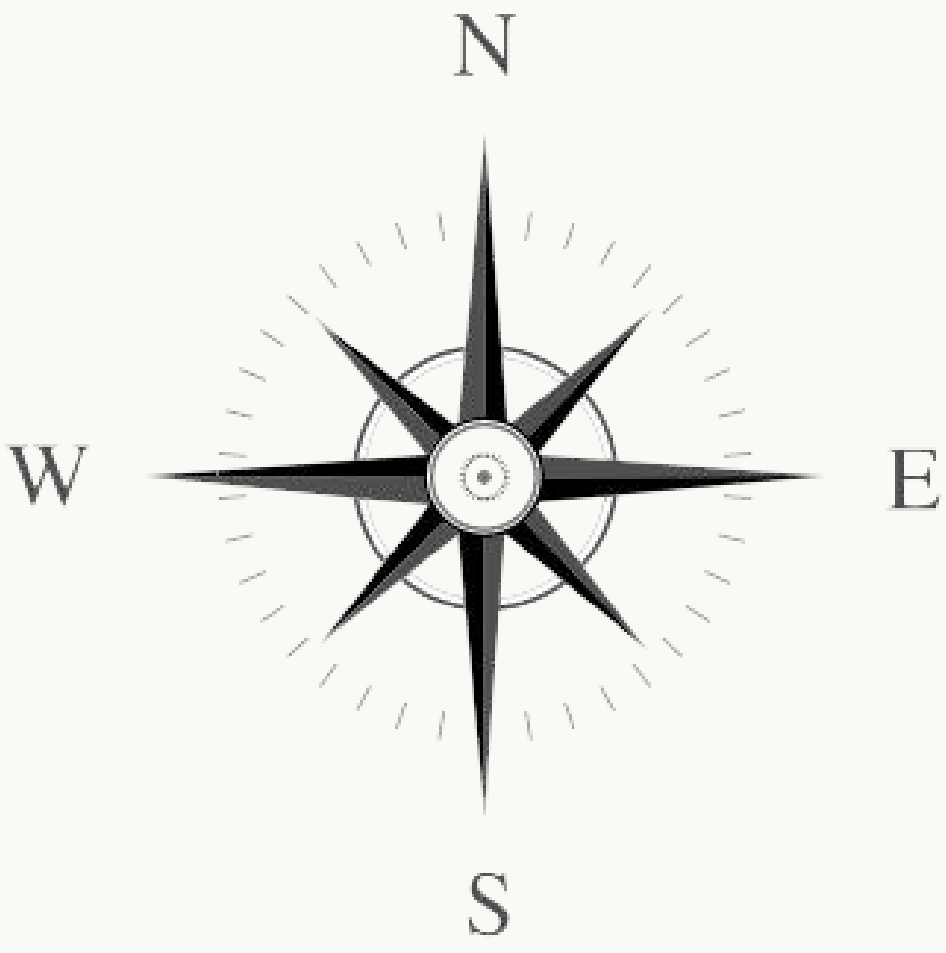
52,3 Sq.m

11,84 Sq.m

Total Living Area

Internal Living Area

Outdoor Living Area



1 Bedroom

101 Block

D

61,9 Sq.m

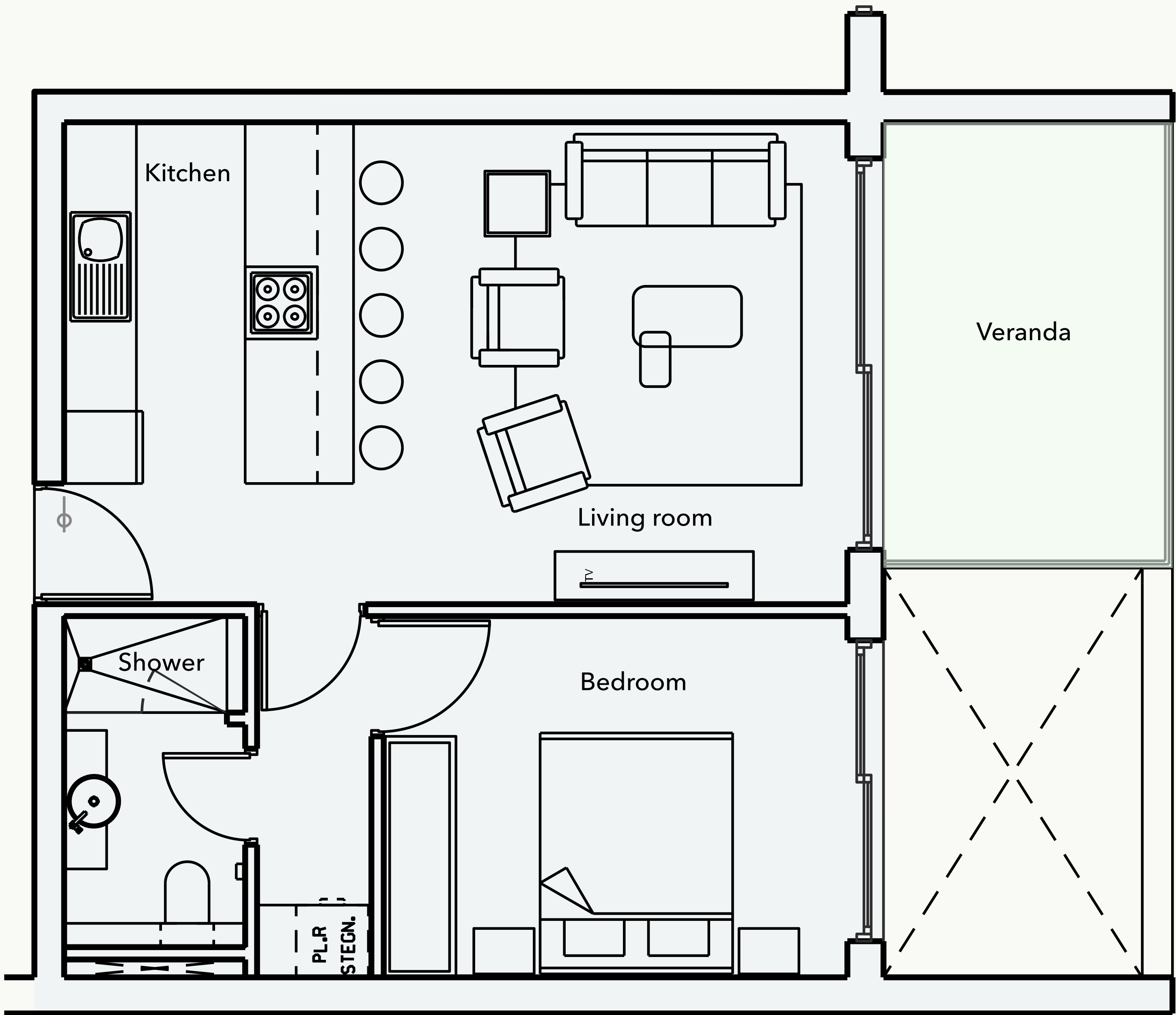
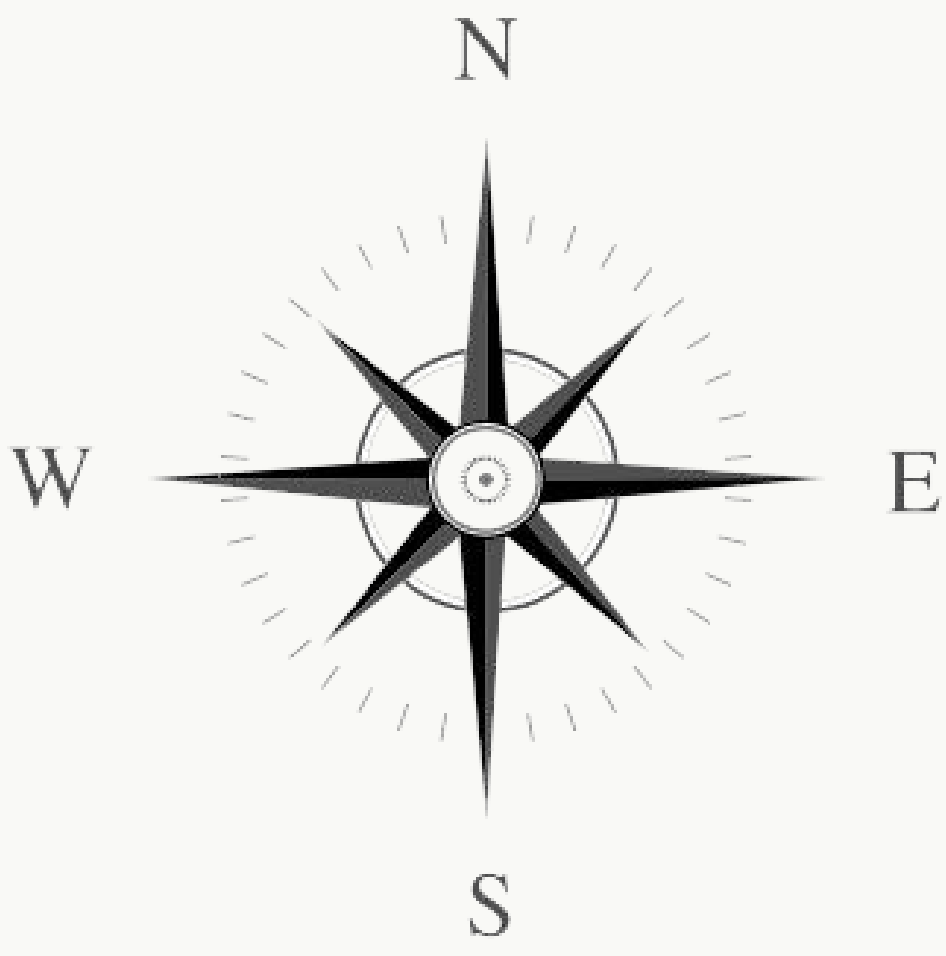
53 Sq.m

8,9 Sq.m

Total Living Area

Internal Living Area

Outdoor Living Area



2 Bedroom

102 BlockD

90,84 Sq.m

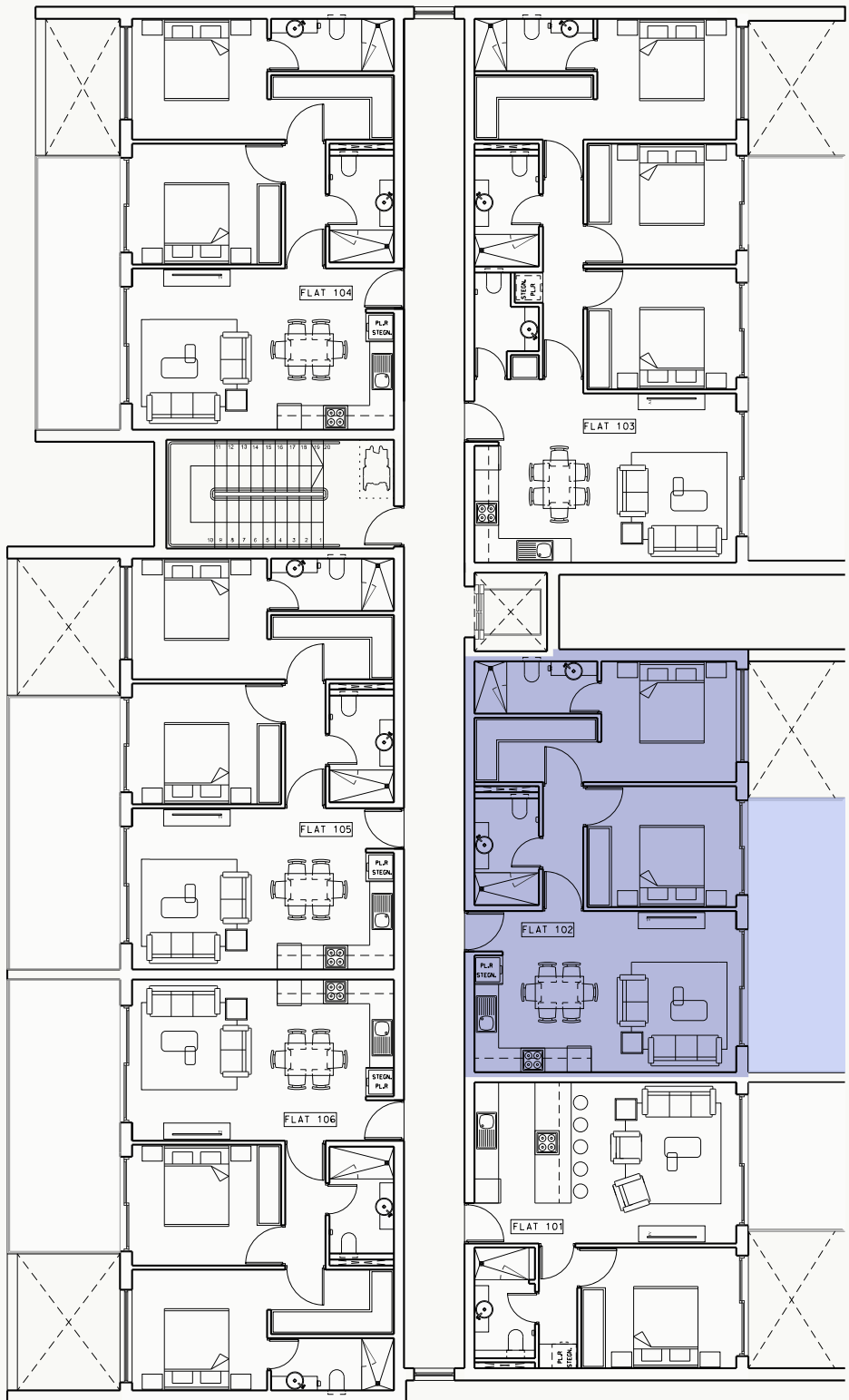
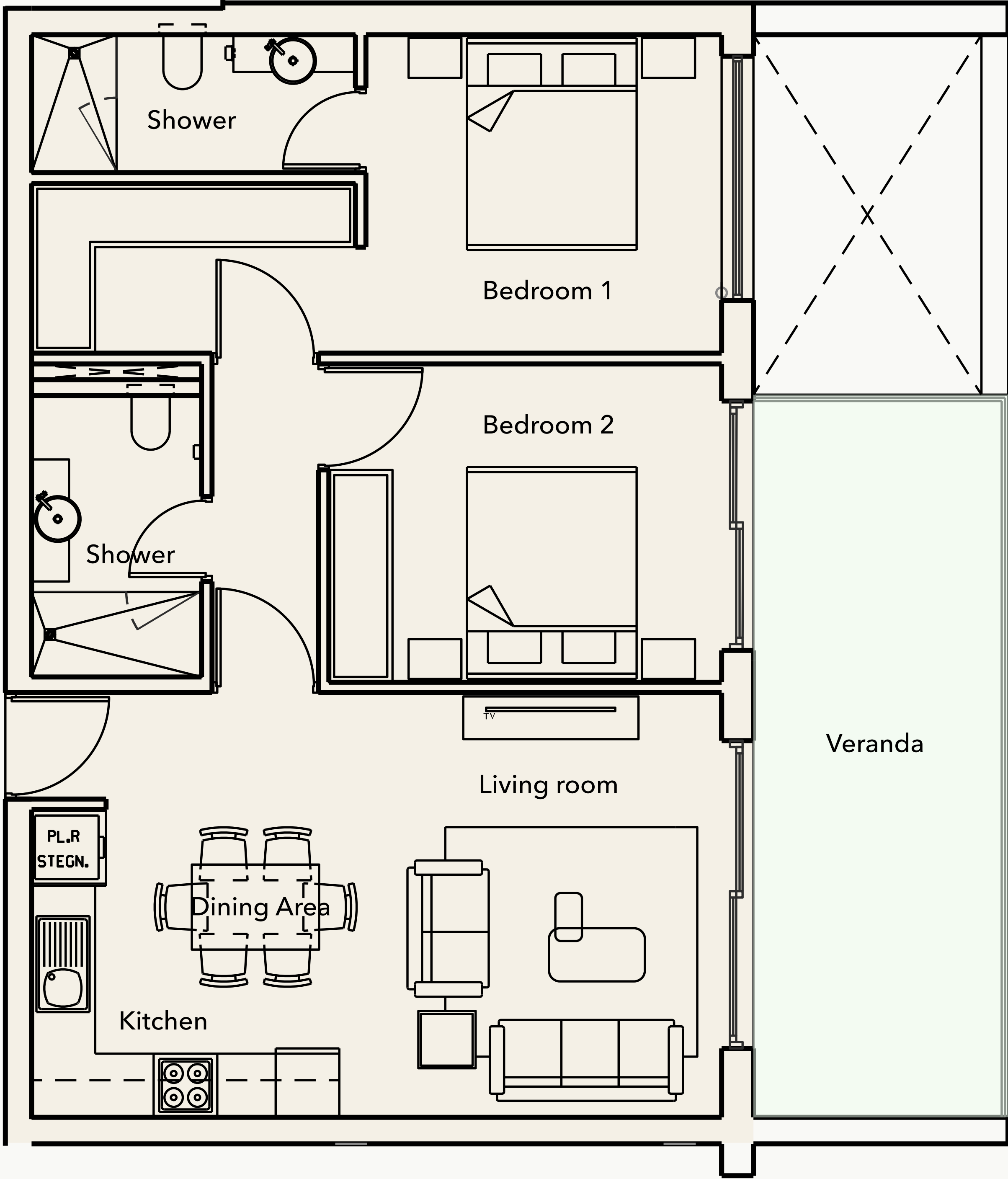
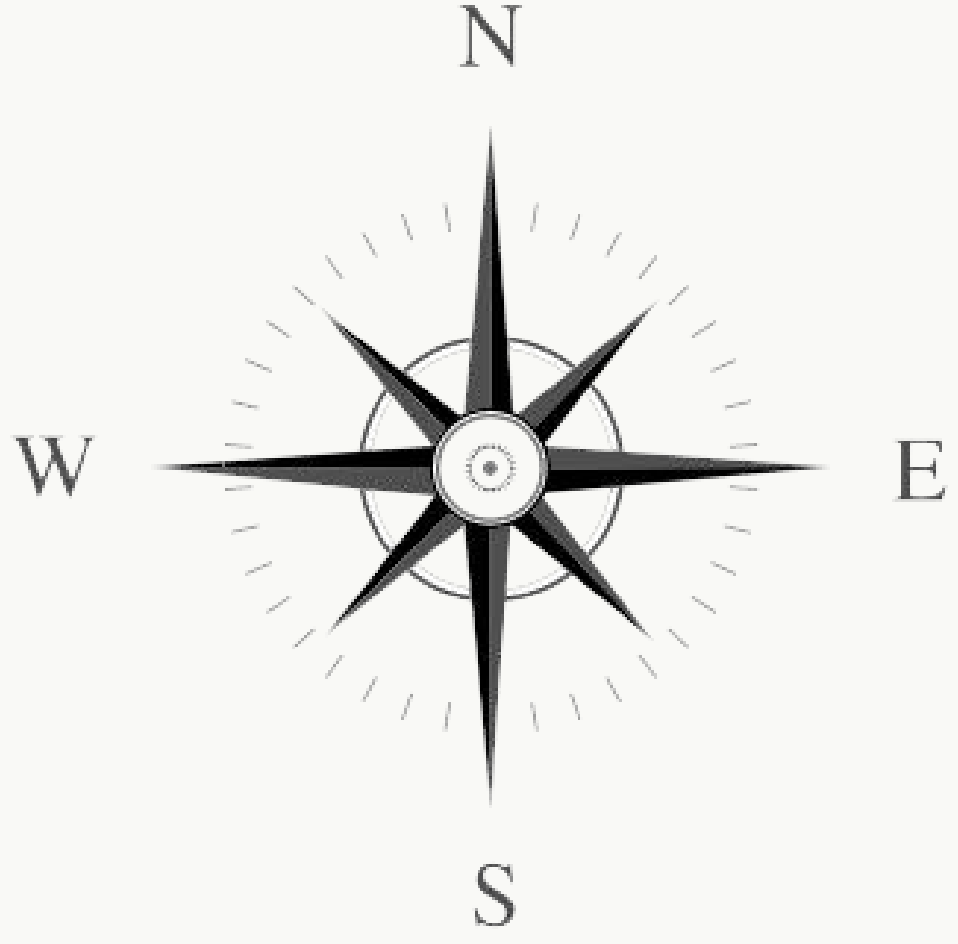
74,5 Sq.m

16,34 Sq.m

Total Living Area

Internal Living Area

Outdoor Living Area



3 Bedroom

103 BlockD

123,1 Sq.m

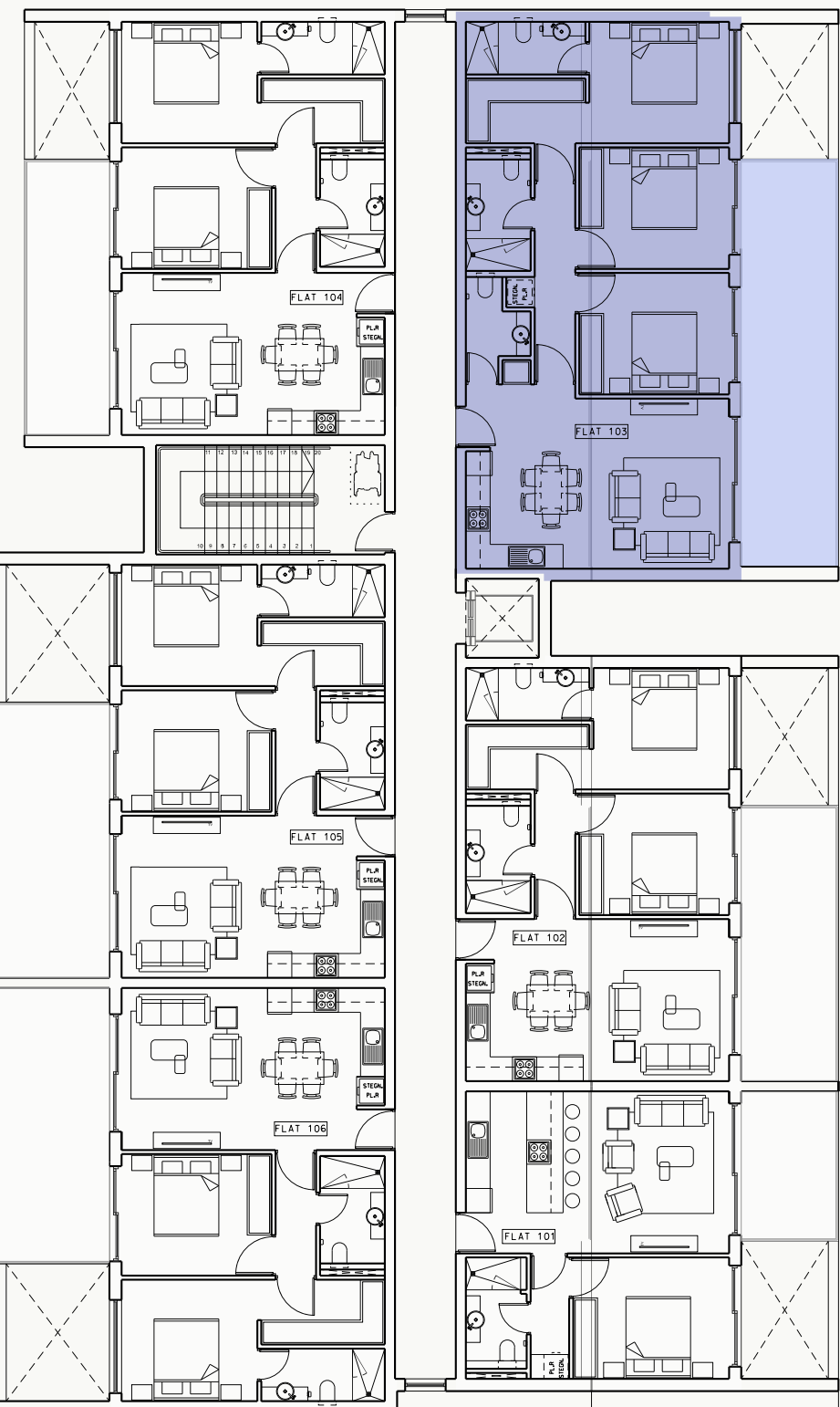
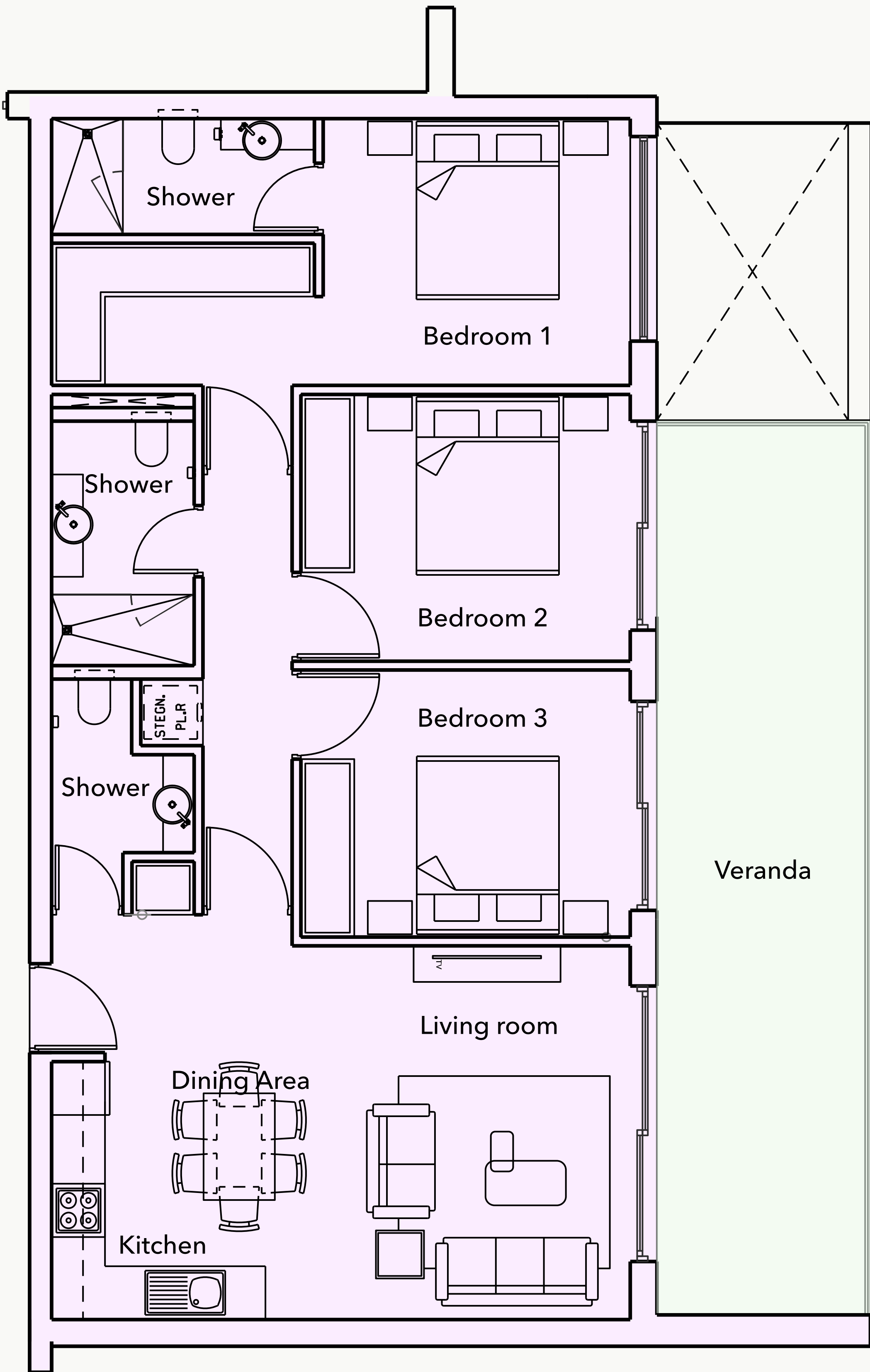
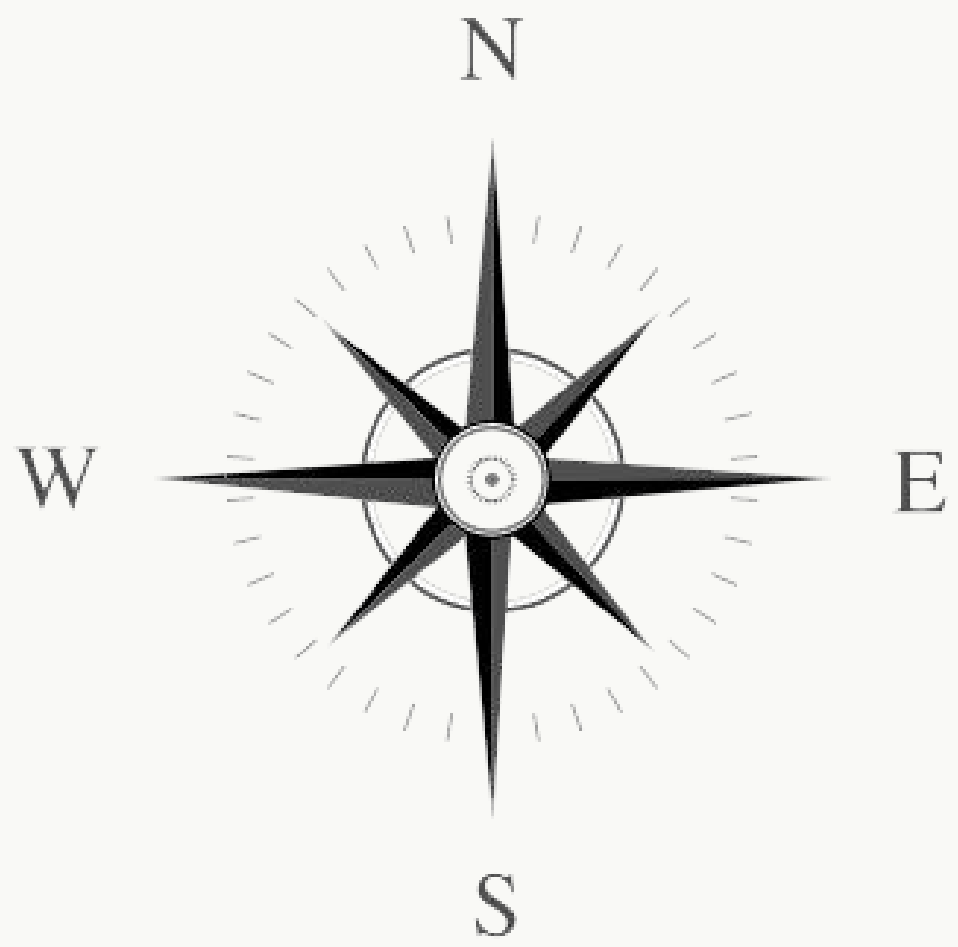
99 Sq.m

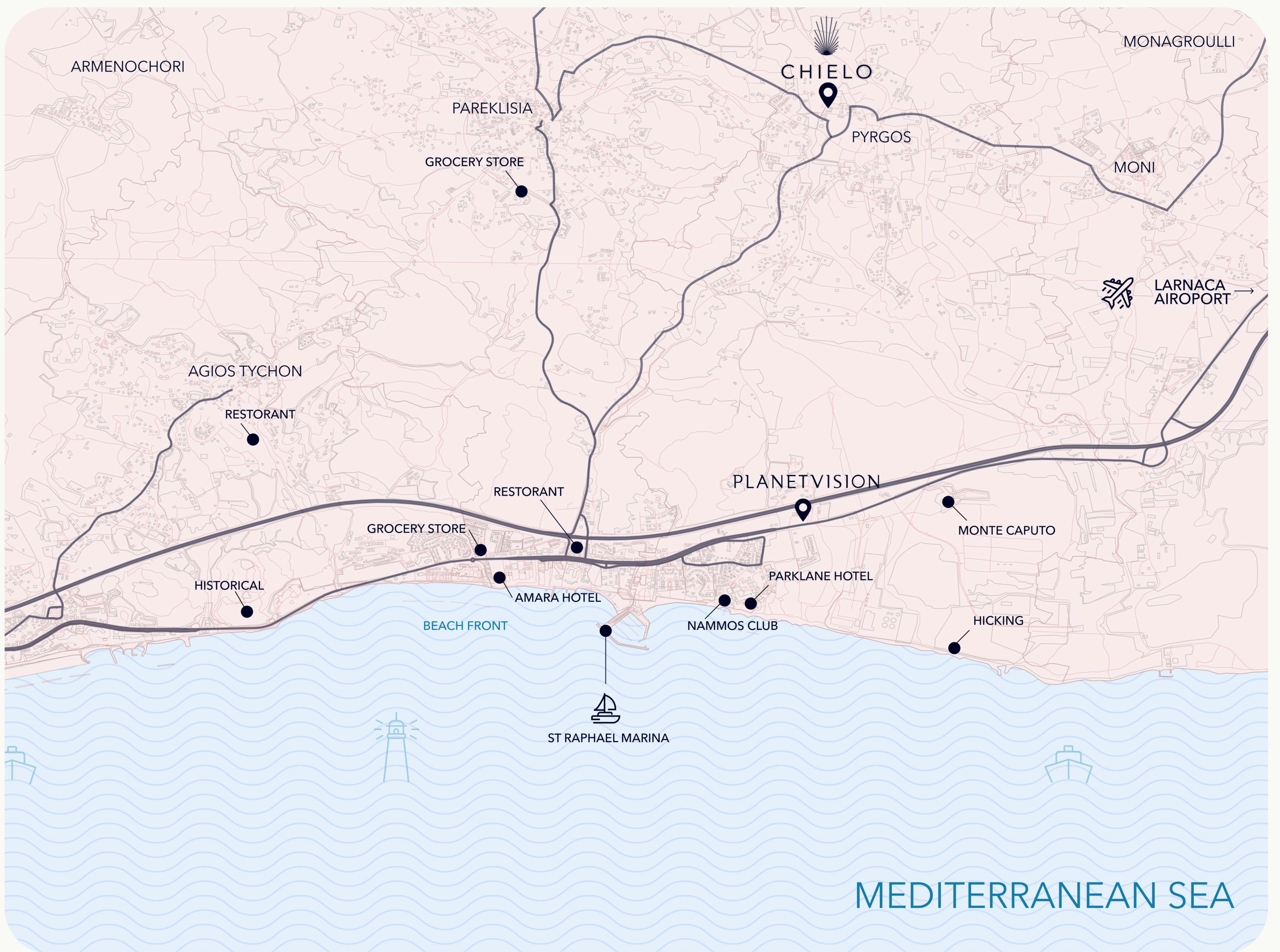
24,1 Sq.m

Total Living Area

Internal Living Area

Outdoor Living Area





Where Authenticity Meets Innovation

CHIELO is a boutique Mediterranean haven of contemporary residences in the heart of Pyrgos village, creating an exclusive community where extraordinary people converge through thoughtful design and authentic connections.

PLANET

Call **+357 7777 8727**, email us at **sales@planetvision.com**,
visit **4, Amathountos Ave., Pyrgos**, Limassol
or explore our website **planetvision.com**



The developer retains the right to make modifications. All measurements and drawings are approximate.
This information may change without notice. Scale drawings, artistic renderings, landscaping and images are for illustrative purposes only and may be subject to change without notice.